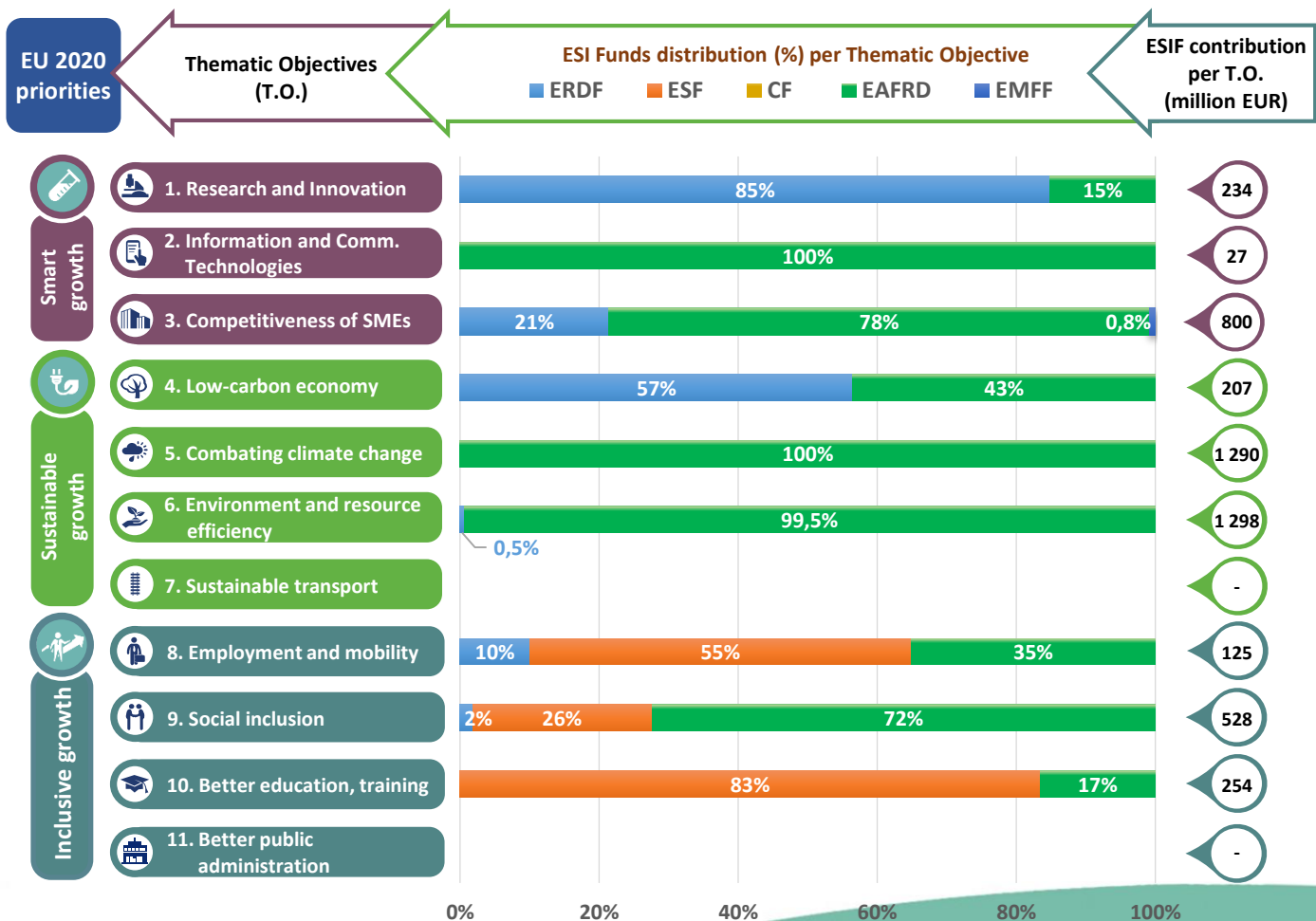
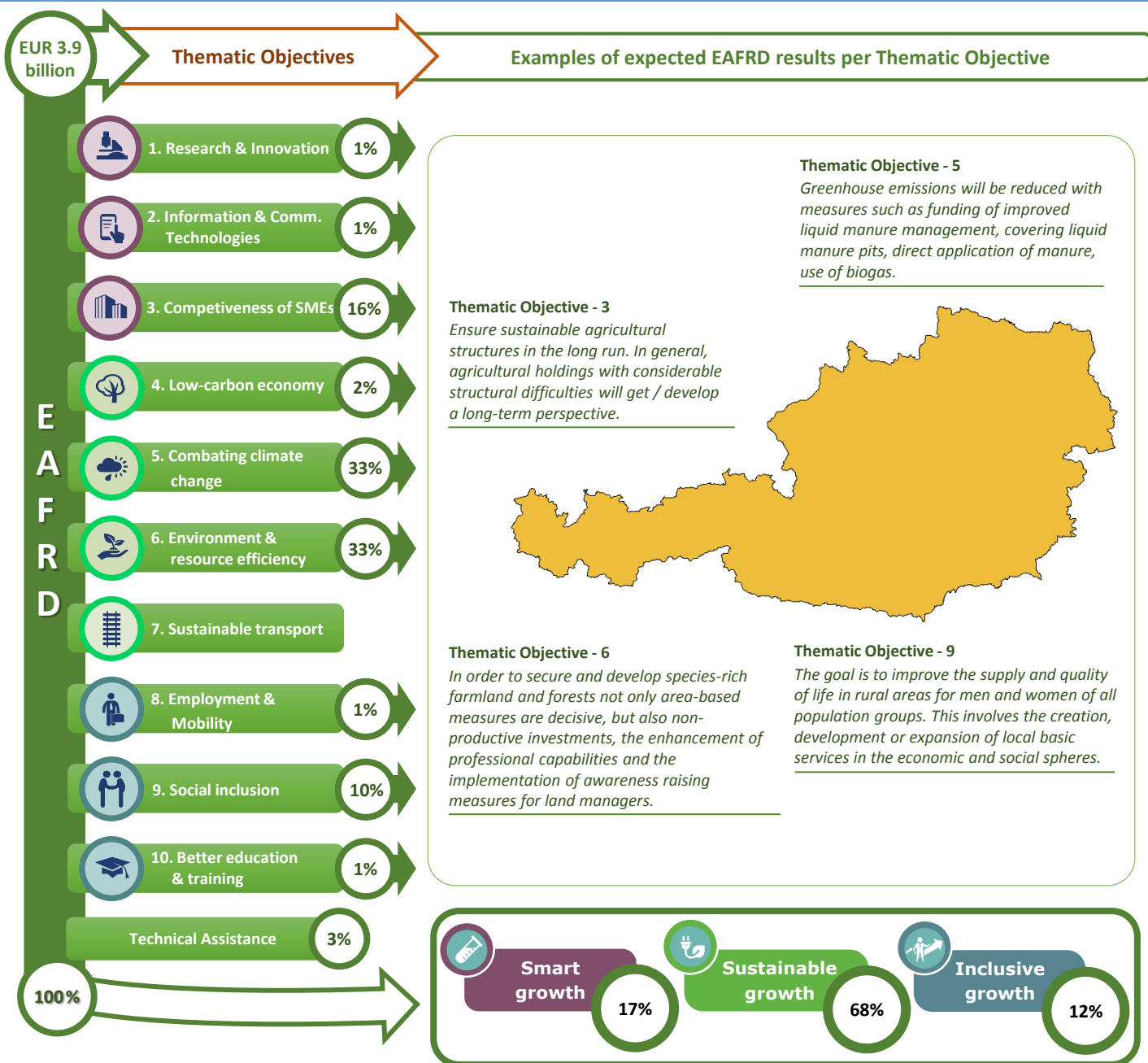


Thematic objectives supported in Austria and ESIF contributions





Integrated approaches to territorial development in rural areas

Community Led Local Development (CLLD) / LEADER

CLLD / LEADER funding for Austria: Primarily through the LEADER and Local Action Groups.

Multi-funded Local Development Strategies: Not envisaged.

Rural areas population limits derogations: In the cross-border area "Dolomiti Live" between Austria and Italy the upper limit will be 200 000 inhabitants but not more than 150 000 residents in each Member State.

Responsible body:	Geschäftsstelle der Österreichischen Raumordnungskonferenz (ÖROK)
Date of PA approval:	17/10/2014

Please note: The data and figures presented in this summary come from the European Commission approved version of the PA for Austria. The information provided in this summary should not be considered a comprehensive account of the original PA content. For the full information please see the original document.

For more information please visit: http://ec.europa.eu/contracts_grants/agreements/index_en.htm