

Evaluation Knowledge Bank Outputs Per CAP Objectives



POWERED BY



Impact assessment toolbox of resilience-enhancing strategies on farming systems

Resilience Assessment tool to assess the capacity of policies to enhance the resilience of EU farming systems

A methodological approach to assess the contribution of risk management to resilience of EU farming systems

The DEMETER Agricultural Information Model



Impact of diversification and databases of European diversification field experiments and experiences



Methodological tool to evaluate farm performance

A methodological tool for the ex post evaluation of past CAP reforms based on FADN data

A methodological tool for the ex ante evaluation of CAP reforms based on FADN data

Methodology for assessing the impact of adopting organic farming on farms' economic and environmental performance



Spatial econometric models for evaluating RDP measures



Methodology for evaluating social innovation in rural areas



Methodology for mapping the distribution of small farms in Europe

Crop type map

Crop area and crop production estimation for small farms

Methodology for quantification of the contribution of small farms to local food systems and food and nutritional security

Participatory foresight analysis on the future potential role of small farms and small food businesses in food and nutrition security



Sustainability indicators at the farm level for monitoring and evaluating the CAP

The FLINT Farm Return data recording system



MIND STEP



MIND STEP Database and Model Interfaces

Data interoperability for farmer performance measurement tool

The DEMETER Agricultural Information Model



Methodology for impact evaluation of digitalisation



Impact assessment toolbox of resilience-enhancing strategies on farming systems



Impact of diversification and databases of European diversification field experiments and experiences



Spatial econometric models for evaluating RDP measures



A methodological tool for the ex post evaluation of past CAP reforms based on FADN data



Methodology for assessing the impact of adopting organic farming on farms' economic and environmental performance

Methodology for evaluating social innovation in rural areas



Sustainability indicators at the farm level for monitoring and evaluating the CAP

The FLINT Farm Return data recording system

Data interoperability for farmer performance measurement tool



MIND STEP



MIND STEP Database and Model Interfaces

The DEMETER Agricultural Information Model



Methodology for impact evaluation of digitalisation



Methodology for evaluating social innovation in rural areas

Database: Social innovations in marginalised rural areas



Methodology for quantification of the contribution of small farms to local food systems and food and nutritional security



Participatory foresight analysis on the future potential role of small farms and small food businesses in food and nutrition security



**REBALANCE
POWER IN
FOOD CHAIN**



Impact of diversification and databases of European diversification field experiments and experiences



Sustainability indicators at the farm level for monitoring and evaluating the CAP

The FLINT Farm Return data recording system



Data interoperability for farmer performance measurement tool



MIND STEP Database and Model Interfaces



CLIMATE CHANGE ACTION

A searchable GHG emissions data repository
Country synthetic plots of GHG time evolution and summary factsheets

The DEMETER Agricultural Information Model

Methodology for impact evaluation of digitalisation

Water abstraction monitoring maps
Drought forecasting based on seasonal climate forecasting in combination with hydrological and crop growth models
Databank to support the implementation and monitoring of the Water Framework Directive

Maps of crop-types, non-productive EFAs, permanent pastures and of farming activities
Geotagged photos to complement Earth Observation data
Soil property map
An Earth Observations based Environmental Performance Tool

Tool for automated support system to monitor agricultural funding sites



Impact of diversification and databases of European diversification field experiments and experiences

Impact assessment toolbox of resilience-enhancing strategies on farming systems
Resilience Assessment tool to assess the capacity of policies to enhance the resilience of EU farming systems

timeStamp



Methodology for evaluating social innovation in rural areas
Database: Social innovations in marginalised rural areas



Analytics on vegetation and soil index time-series
Cultivated crop type maps
Grassland mowing events detection

Map of tillage changes
Crop type maps
Yield and biomass maps
Map of irrigated and non-irrigated areas



Methodology for assessing the impact of adopting organic farming on farms' economic and environmental performance

Crop type map
Grassland mowing detection tool
Vegetation status indicator tool
Agricultural practices monitoring product
Markers Database



Sustainability indicators at the farm level for monitoring and evaluating the CAP
The FLINT Farm Return data recording system

Methodology for mapping the distribution of small farms in Europe
Crop type map
Crop area and crop production estimation for small farms



An inventory of farming practices and their impacts on the environment and climate

The INSPIRE Database and Geoportal

MIND STEP Database and Model Interfaces

Agro-environmental monitoring tool: Operationalising agro-climatic and agro-environmental indicators

Earth Observation monitoring and traffic lights tool

A farm registry tool for exchanging information and data among databases

Data interoperability for farmer performance measurement tool

Agricultural Biodiversity Trend Monitoring



ENVIRONMENTAL CARE

The DEMETER Agricultural Information Model

Inventory of digital tools and their potential socio-economic impacts

Water abstraction monitoring maps
Drought forecasting based on seasonal climate forecasting in combination with hydrological and crop growth models
Databank to support the implementation and monitoring of the Water Framework Directive

Maps of crop-types, non-productive EFAs, permanent pastures and of farming activities
Geotagged photos to complement Earth Observation data
Soil property map
An Earth Observations based Environmental Performance Tool

Tool for automated support system to monitor agricultural funding sites

Spatial econometric models for evaluating RDP measures

Methodology for evaluating social innovation in rural areas
Database: Social innovations in marginalised rural areas

Map of tillage changes
Crop type maps
Yield and biomass maps
Map of irrigated and non-irrigated areas

Crop type map
Vegetation status indicator tool
Agricultural practices monitoring product
Markers Database

Methodology for mapping the distribution of small farms in Europe
Crop type map
Crop area and crop production estimation for small farms

Agro-environmental monitoring tool: Operationalising agro-climatic and agro-environmental indicators

Earth Observation monitoring and traffic lights tool

A farm registry tool for exchanging information and data among databases

Data interoperability for farmer performance measurement tool

Agricultural Biodiversity Trend Monitoring



timeStamp



IMAP4AGRI



Impact of diversification and databases of European diversification field experiments and experiences

Analytics on vegetation and soil index time-series
Cultivated crop type maps
Identification of organic farming practices

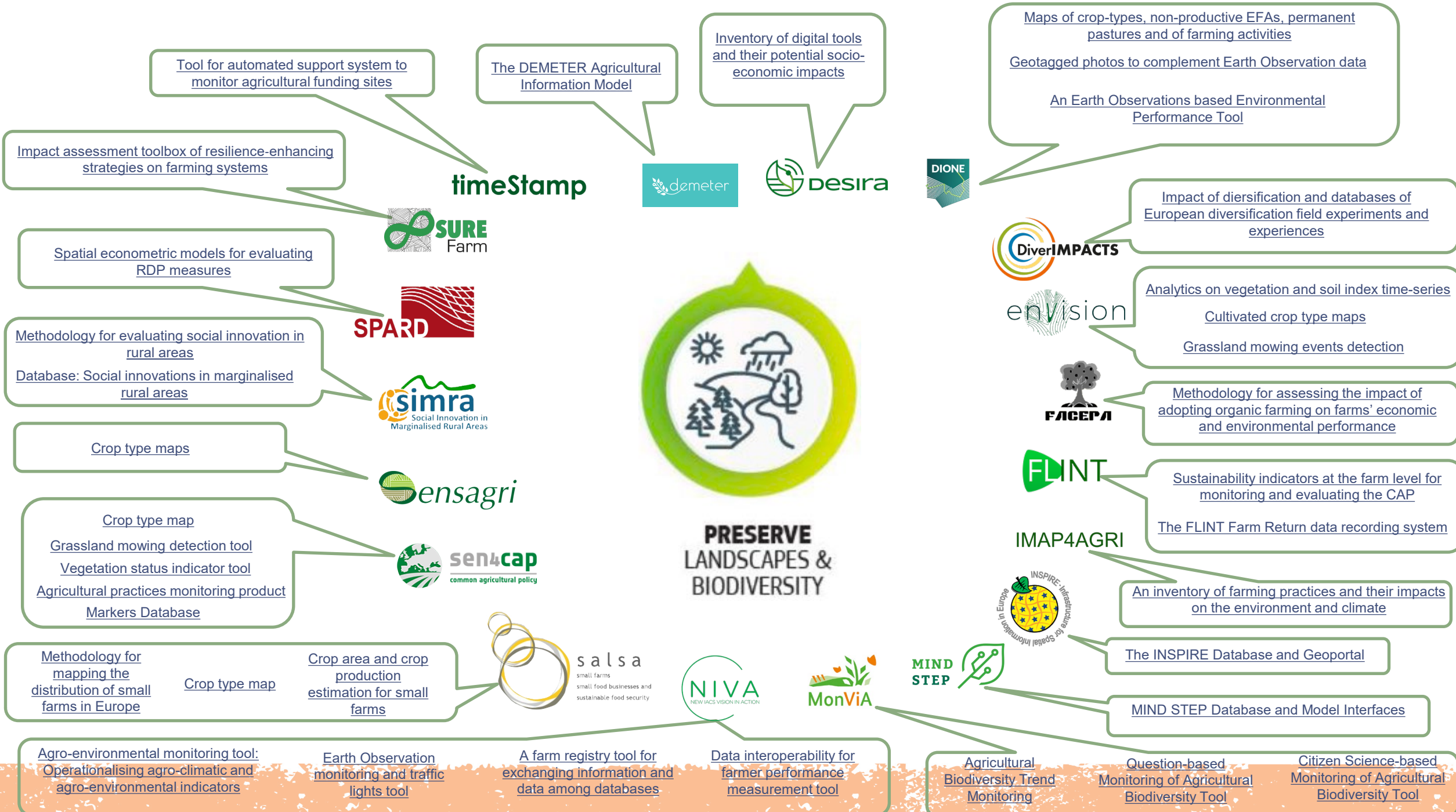
Methodology for assessing the impact of adopting organic farming on farms' economic and environmental performance

Sustainability indicators at the farm level for monitoring and evaluating the CAP
The FLINT Farm Return data recording system

An inventory of farming practices and their impacts on the environment and climate

The INSPIRE Database and Geoportal

MIND STEP Database and Model Interfaces



A mixed method approach to assess the impact of the young farmers scheme on structural change



Impact of diversification and databases of European diversification field experiments and experiences



Methodology for evaluating social innovation in rural areas



**SUPPORT
GENERATIONAL
RENEWAL**



Sustainability indicators at the farm level for monitoring and evaluating the CAP

The FLINT Farm Return data recording system

Comparative analysis on rural newcomers, new entrants into farming and successors in farming



RURALIZATION



The INSPIRE Database and Geoportal

Spatial econometric models for evaluating RDP measures



Modelling broadband access impact on the economic growth at NUTS 3 level



Methodology for evaluating social innovation in rural areas

Database: Social innovations in marginalised rural areas



Impact of diversification and databases of European diversification field experiments and experiences



Participatory foresight analysis on the future potential role of small farms and small food businesses in food and nutrition security



VIBRANT RURAL AREAS



Sustainability indicators at the farm level for monitoring and evaluating the CAP

The FLINT Farm Return data recording system

The MATILDE Matrix
Maps of MATILDE regions
MATILDE Toolbox



Local level database for socio-economic indicators

Proposal for a composite indicator for local development

The INSPIRE Database and Geoportal



Methodology for impact evaluation of digitalisation

Impact of diversification and databases of European diversification field experiments and experiences

Identification of organic farming practices

The DEMETER Agricultural Information Model



Impact assessment toolbox of resilience-enhancing strategies on farming systems



Methodology for assessing the impact of adopting organic farming on farms' economic and environmental performance

Methodology for evaluating social innovation in rural areas



Sustainability indicators at the farm level for monitoring and evaluating the CAP

The FLINT Farm Return data recording system

Crop area and crop production estimation for small farms
Methodology for quantification of the contribution of small farms to local food systems and food and nutritional security
Participatory foresight analysis on the future potential role of small farms and small food businesses in food and nutrition security



IMAP4AGRI

An inventory of farming practices and their impacts on the environment and climate

The INSPIRE Database and Geoportal

Data interoperability for farmer performance measurement tool

Agricultural Biodiversity Trend Monitoring

Question-based Monitoring of Agricultural Biodiversity Tool

Citizen Science-based Monitoring of Agricultural Biodiversity Tool

The DEMETER Agricultural Information Model



Knowledge and Innovation

MIND STEP



MIND STEP Database and Model Interfaces

Inventory of digital tools and their potential socio-economic impacts

Methodology for impact evaluation of digitalisation

Modelling broadband access impact on the economic growth at NUTS 3 level



Sustainability indicators at the farm level for monitoring and evaluating the CAP

The FLINT Farm Return data recording system

Methodology for evaluating social innovation in rural areas

Database: Social innovations in marginalised rural areas



Methodological framework for assessing impact of social innovation



**For More Information Visit the Evaluation
Knowledge Bank on the ENRD Website!**

https://enrd.ec.europa.eu/evaluation/knowledge-bank_en

European Evaluation Helpdesk for Rural Development
Boulevard Saint Michel 77-79
B-1040 Brussels
Tel. +32 2 7375130
E-mail info@ruralevaluation.eu
<http://enrd.ec.europa.eu/evaluation>

 [@ENRD_Evaluation](https://twitter.com/ENRD_Evaluation)

