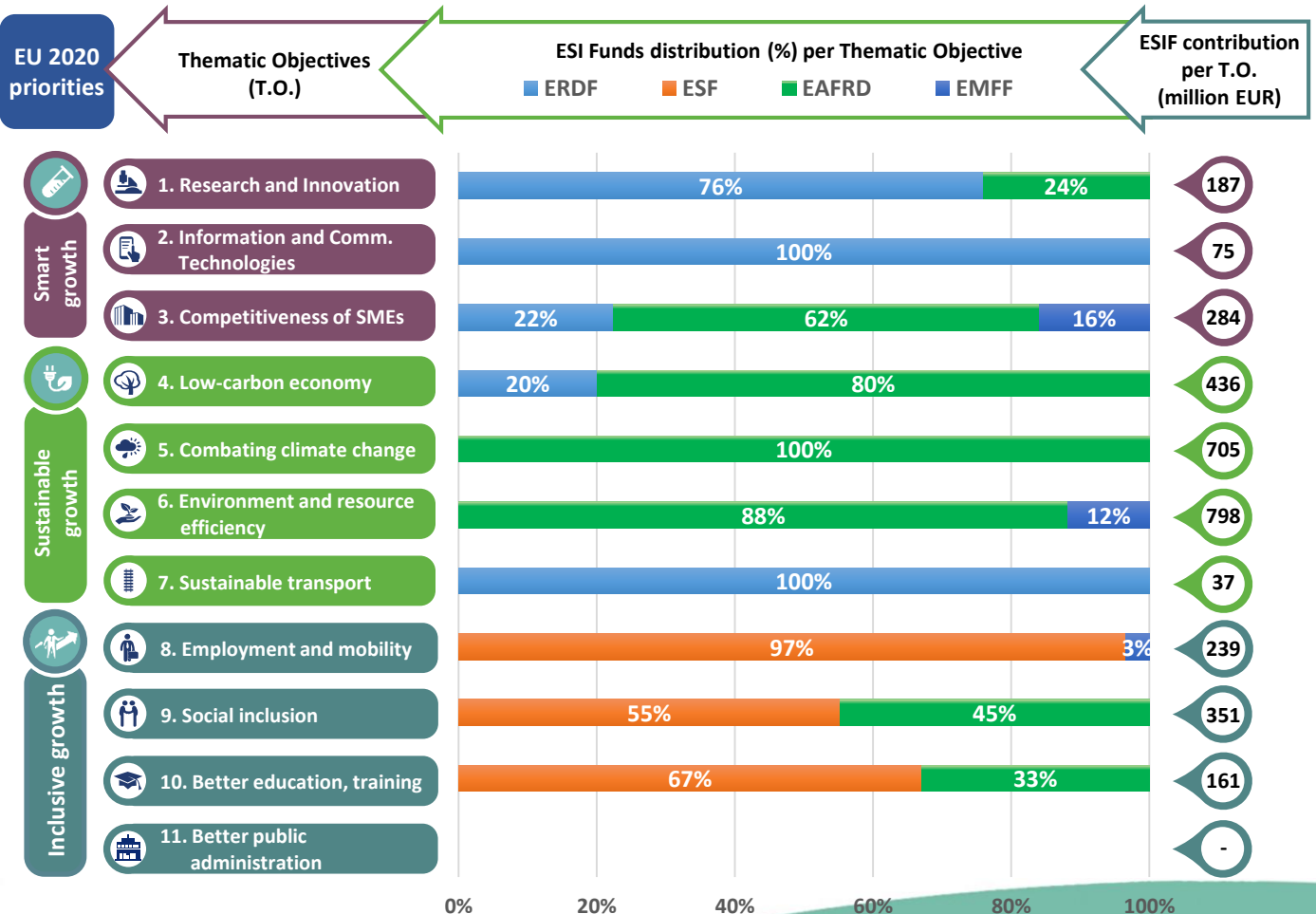
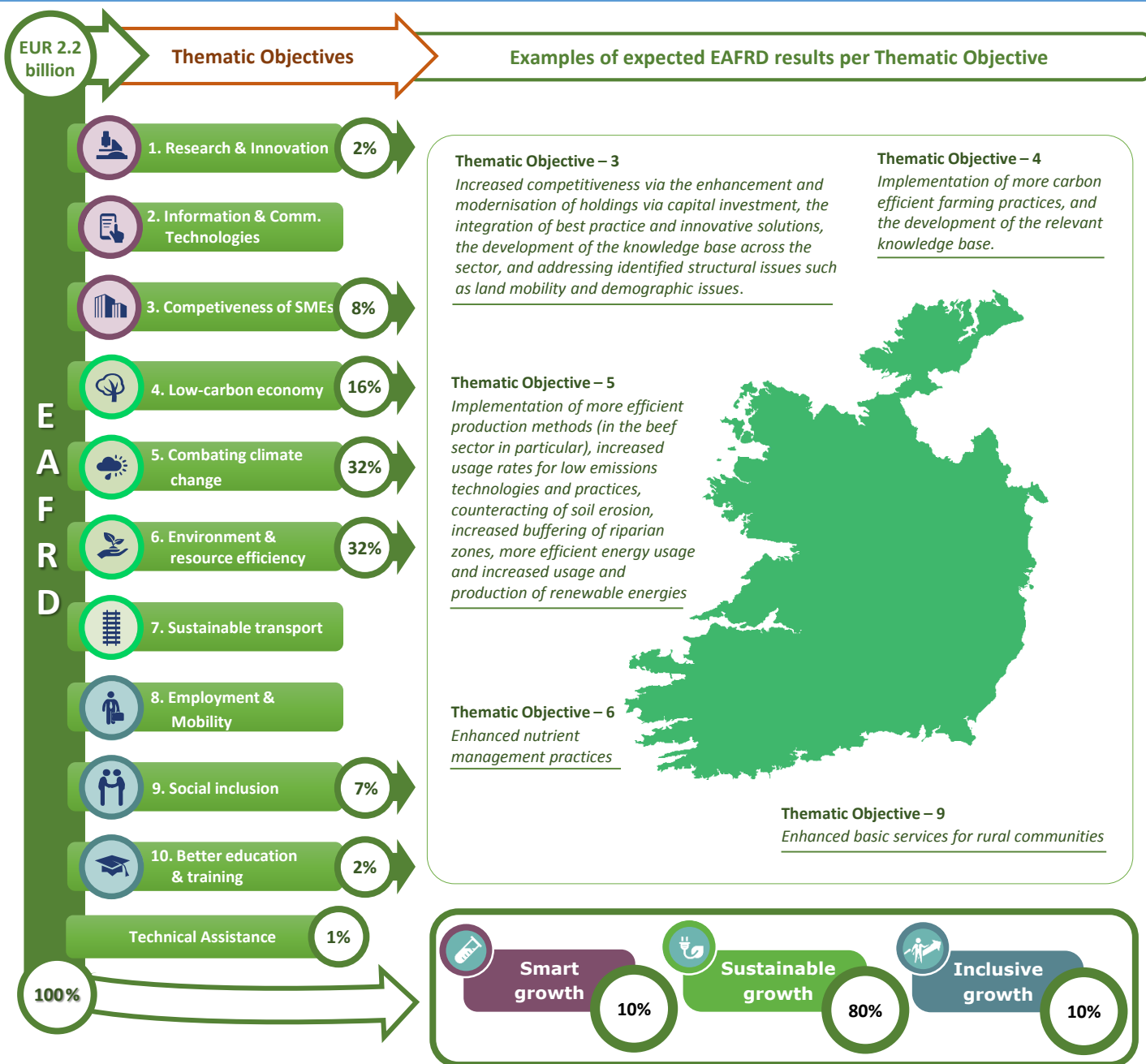


### Thematic objectives supported in Ireland and ESIF contributions



# EAFRD allocation per Thematic Objective & expected results



## Integrated approaches to territorial development in rural areas

### Community Led Local Development (CLLD) / LEADER

**CLLD/LEADER funding in Ireland:** 7% of the total EAFRD budget.

**Multi-funded Local Development Strategies:** Ireland will implement a single fund approach for LEADER.

**Rural areas population limits derogations:** Possible derogation from the upper population limit (150 000 inhabitants) is under consideration.

<b>Responsible body:</b>	Department of Public Expenditure and Reform (DPER)
<b>Date of PA approval:</b>	18/11/2014

**Please note:** The data and figures presented in this summary come from the European Commission approved version of the PA for Ireland. The information provided in this summary should not be considered a comprehensive account of the original PA content. For the full information please see the original document.

For more information please visit: [http://ec.europa.eu/contracts\\_grants/agreements/index\\_en.htm](http://ec.europa.eu/contracts_grants/agreements/index_en.htm)