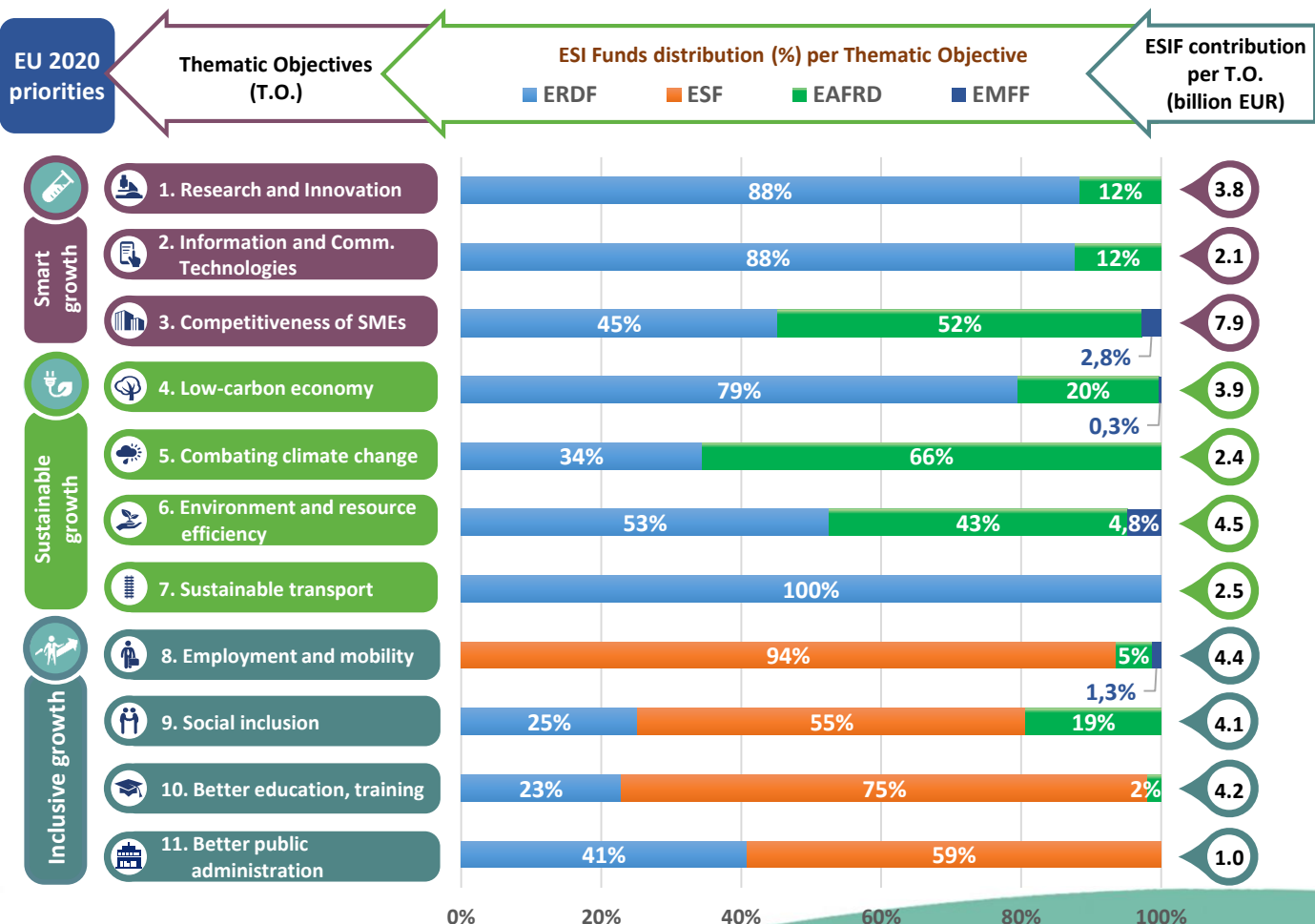
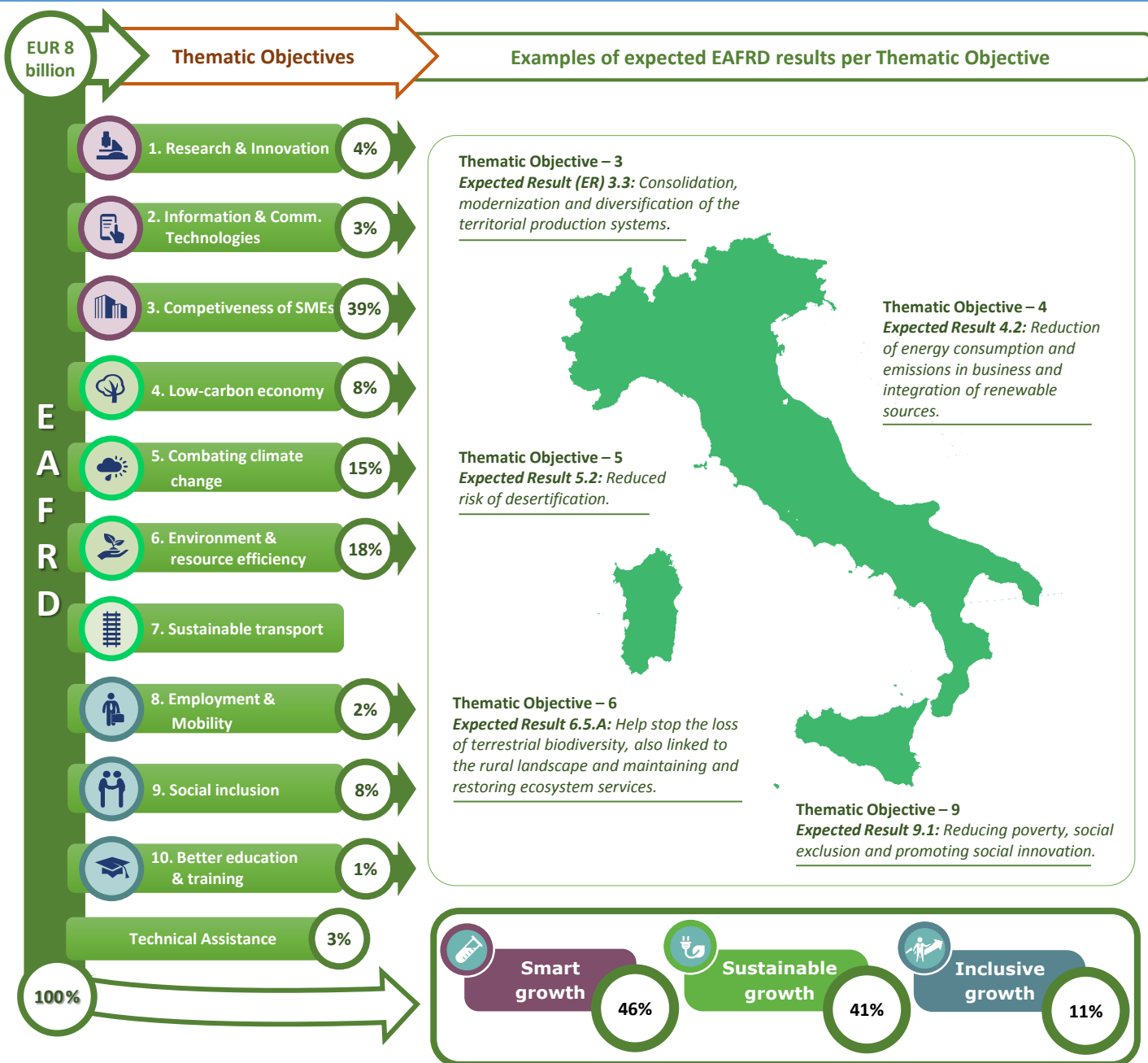


Thematic objectives supported in Italy and ESIF contributions



(*) The negotiations on the Operational Programmes will result in changes in the allocation of resources



Integrated approaches to territorial development in rural areas

Community Led Local Development (CLLD) / LEADER

CLLD/LEADER funding in Italy: Minimum 5% of each Rural Development Programme.

Multi-funded Local Development Strategies: Yes, to be decided at regional level.

Rural areas population limits derogations: up to a maximum of 200 000 inhabitants, in:

- territories with a high population density (higher than 150 inhabitants / sq km);
- territories that exceed 150 000 inhabitants inclusive of homogeneous socio-economic areas, or areas that require the inclusion of neighboring territories for a more effective specification of the local development strategies.

Responsible body: Department of Development and Economic Cohesion (DPS)

Date of PA approval: 29/10/2014

Please note: The data and figures presented in this summary come from the European Commission approved version of the PA for Italy. The information provided in this summary should not be considered a comprehensive account of the original PA content. For the full information please see the original document.

For more information please visit: http://ec.europa.eu/contracts_grants/agreements/index_en.htm