

Experiences of rural bioeconomy 'practitioners'

dr. ir. Caroline Van der Heyden

ENRD seminar
3/07/2019



BOERENBOND
trouw aan land- en tuinbouw

- uniting members, promoting their interests and representing them on all policy levels
- offering education and information
- stimulating initiatives related to improving production, supply, sales and stimulating services
- assisting members in taking a new direction and innovating their business
- facilitating participation in different projects
- guiding local authorities and citizens to discover and meet challenges in their villages

members: 16,000 active farmers
and horticulturists in Flanders

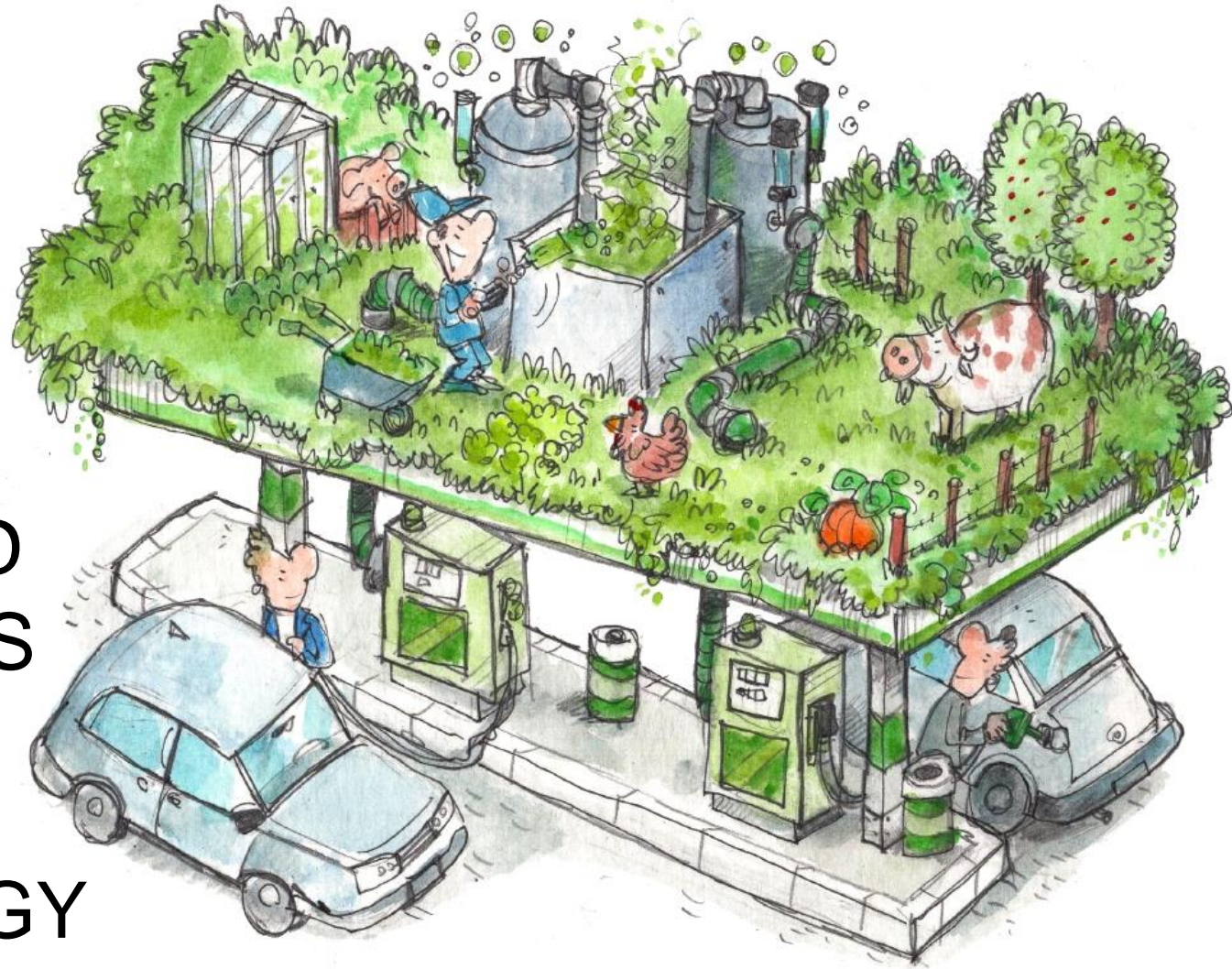
The circular bio-society

FOOD

FEED

BIO-BASED
PRODUCTS

BIO-ENERGY



Hemp in a box



Haspencubes



Biomass hubs



landschapsenergie
cvba so



Integrated biorefineries



Bio Base Europe
Pilot Plant



Bioeconomy challenges

- Start from waste instead of raw materials
 - Most efficient - cascade principle
 - More difficult in terms of logistics, stable product properties, constant supply
 - More difficult in terms of legislation
- Stabilized sales required
 - Stimulate market demand
 - Public awareness campaigns
 - Understandable standards or labels for bio-based products



Take home messages

- Integrate primary production (farmers and forest owners) in the bioeconomy value chains
- Promoting all types of transfer of knowledge and advisory services on the bioeconomy to all stakeholders
- Regulatory and policy stability – better policy coherence en coordination – reduction of restrictive legislation

Thank you for your attention